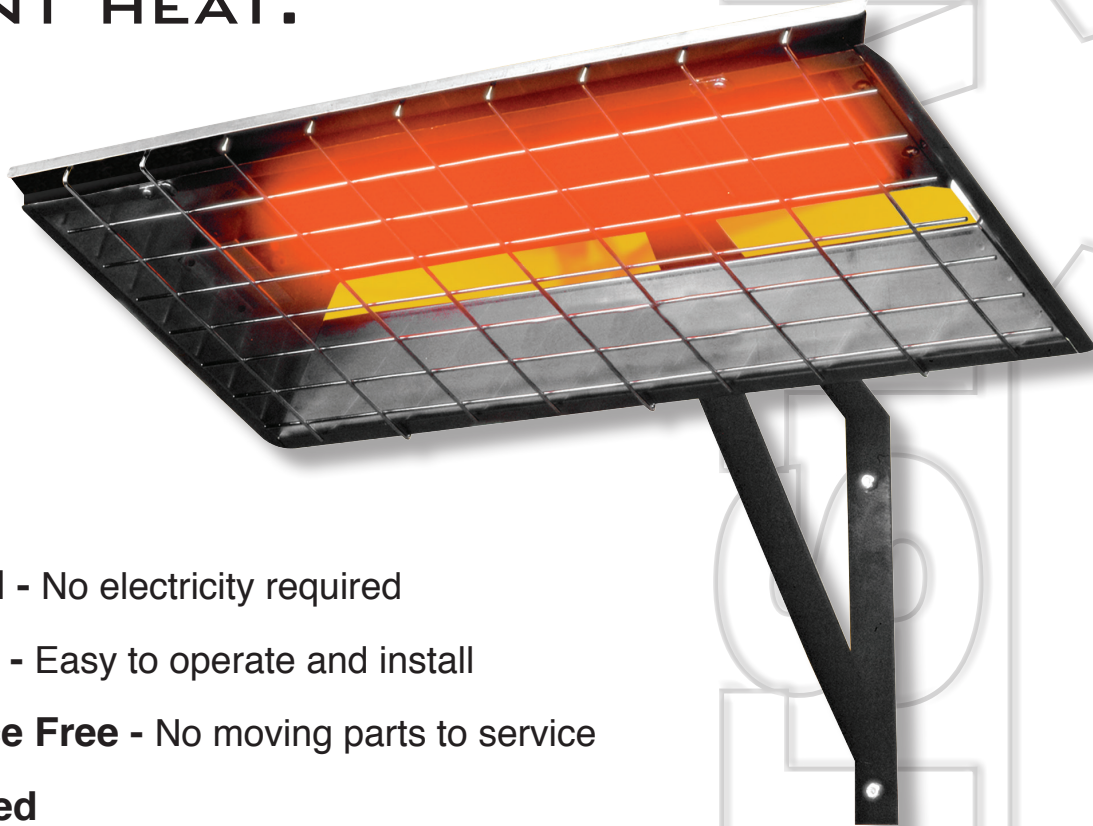


# HIGH INTENSITY INFRARED HEATERS



**HIGHLY EFFICIENT  
AND COST EFFECTIVE  
RADIANT HEAT.**

**HEATSTAR**  
by ENERCO



- **Economical** - No electricity required
- **Convenient** - Easy to operate and install
- **Maintenance Free** - No moving parts to service
- **CSA Certified**
- **Limited 1-Year Warranty** - On gas control
- **Limited 5-Year Warranty** - On burner
- **Quiet, Clean, Odor-Free Operation**
- **Includes Thermostat**
- **Available in Propane (22,000 BTU/Hr.) or Natural Gas (25,000 BTU/Hr.)**



**22,000-25,000 BTU/HR HEATERS FOR:**

- **Garages/Workshops • Barns/Utility/Storage Sheds • Animal Pens/Stalls • Loading Docks**  
• **Building Construction Sites • Doorways/Ramps for Snow Prevention**

**AMERICA'S MOST COMPLETE LINE OF INFRARED HEATERS.**

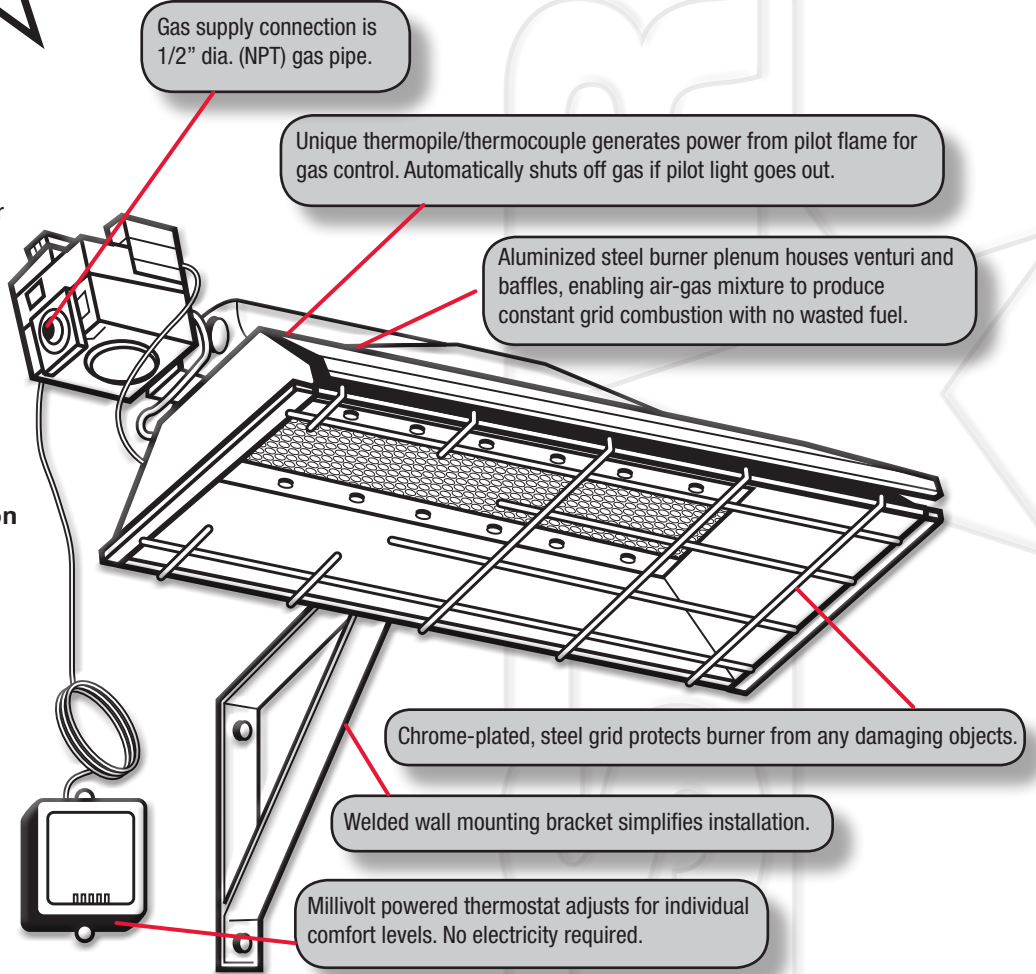
©2011 Enerco Group Inc. • 4560 W 160th street • Cleveland OH 44135 • 800.251.0001 • [www.heatstarbyenerco.com](http://www.heatstarbyenerco.com)

# HEATSTAR

by ENERCO

## GARAGE/WORKSHOP INFRARED HEATERS

- **Efficient Infrared Heat** - Directly heats people and objects which in turn heats surrounding air to desired temperature
- **Instant Heat** - Includes adjustable thermostat for individually controlled warmth
- **Large Capacity** - Heats 500-600 sq. ft. (Average 2 1/2 car garage)
- **Quiet Clean, Odor Free Operation** - Propane or natural gas
- **Ships complete in package for easy installation**
- **Includes wall louvre for fresh air intake**
- **Limited 1 year warranty** - On gas control
- **Limited 5 year warranty** - On burner



### WHY HEAT A GARAGE?

- A heated garage can be used for DIY auto/mechanical maintenance, workshop and hobby activities, recreation and laundry facilities and for pet comfort.
- A typical 2 car garage represents approximately 20% of the usable space in an average home
- Garages are the most under-utilized space in most climates during the winter months
- Cold garage temperatures may affect vehicles and plumbing



### SPECIFICATIONS & TECHNICAL DATA

Model Number	BTU/HR Rating		Normal Mounting Position	Mounting Clearance to Combustibles				Reflector Dimensions LxWxH (Inches)	Total Dimensions LxWxH (Inches)	Shipping Weight (lbs)	Gas Inlet	Manifold Pressure
	Natural Gas	Propane		Top	Side	Back	Below					
HS22L	-	22,000*	30°	14"	16"	12"	48"	26 1/2 x 11 9/16 x 3 1/4	29 3/4 x 12 1/4 x 7	25	1/2"	10"
HS25N	25,000*	-	30°	14"	16"	12"	48"	26 1/2 x 11 9/16 x 3 1/4	29 3/4 x 12 1/4 x 7	25	1/2"	6"

\* Ratings show are for elevations up to 2,000 feet. (In Canada, refer to rating tag.) For elevations above 2,000 feet, ratings should be reduced at the rate of 4% for each 1,000 feet above sea level or as specified by local authority having jurisdiction.

DO NOT use this in sleeping quarters, mobile homes or recreational vehicles.

L201-B